

Notes
1. Plan based on Wearmouth Architectural Design Site Layout plan ref. 2090/108.

- Legend**
- Existing retained tree
 - Existing retained planting
 - Proposed tree planting
 - Proposed Hedgerow planting
 - Proposed feature shrub planting
 - Proposed ornamental planting
 - Proposed amenity grass

OUTLINE PLANTING SPECIFICATION
Generally:
All soft landscape operations are to be undertaken during the first available planting season, immediately following completion of all construction operations, or in accordance with any planning approval/conditions, whichever is most applicable.

All setting out of trees, shrubs and grass within new soft landscape areas shall be inspected and approved by the Landscape Architect prior to planting operations commencing.

Prior to planting, all earthworks associated with landscape operations are to be made good, levels graded to top of back of kerb and mounded as appropriate using approved topsoil as required. Under no circumstances are new topsoil levels to be raised to the bases of existing mature trees and shrubs.

Damage to existing or mature planting should be kept to an absolute minimum by the establishment of new protective fence lines, all at the direction of the landscape architect, however where this does occur it is to be made good by either selective removal, coppicing or restorative pruning.

Existing topsoiled areas to be subsoil cultivated to a minimum depth of 450mm (where services allow) prior to topsoil cultivation to a minimum depth of 350mm in all areas.

Remove all deleterious arisings from above cultivations, together with all surface debris currently on site. In all new topsoil areas, excavate to 450mm minimum depth for shrub planting, and 150mm for grassed areas, removing all excavated subsoil from site. Cultivate a further 250mm to relieve compaction in all areas.

Replace above excavations with approved quality topsoil to the following minimum depths:
Shrub planting - 450mm
Grassed area - 150mm

Finished levels of topsoil after settlement to be 50mm above adjacent hard paved areas in all instances.

Trees:
Excavate tree pits for trees as follows:
14-16cm 1000mm dia x 750mm deep

Backfill tree pits with approved quality topsoil and tree planting and mulching compost.

Shrub Planting:
As scheduled, container grown unless otherwise specified and to be planted evenly spaced at the densities indicated. Individual planting holes to incorporate fertiliser and soil ameliorant as required, and to make up any deficiencies identified on site. Water all plants thoroughly immediately following planting using a fine rose sprinkler. Where agreed, supply and spread minimum 50mm thick, thoroughly composted bark or equivalent organic mulch.

Grassed Areas:
Amenity grass lawn areas to be Rolawn Medallion turf, or similar approved.
Finished levels of topsoil after settlement are to be 50mm above adjacent hard paved areas in all instances.

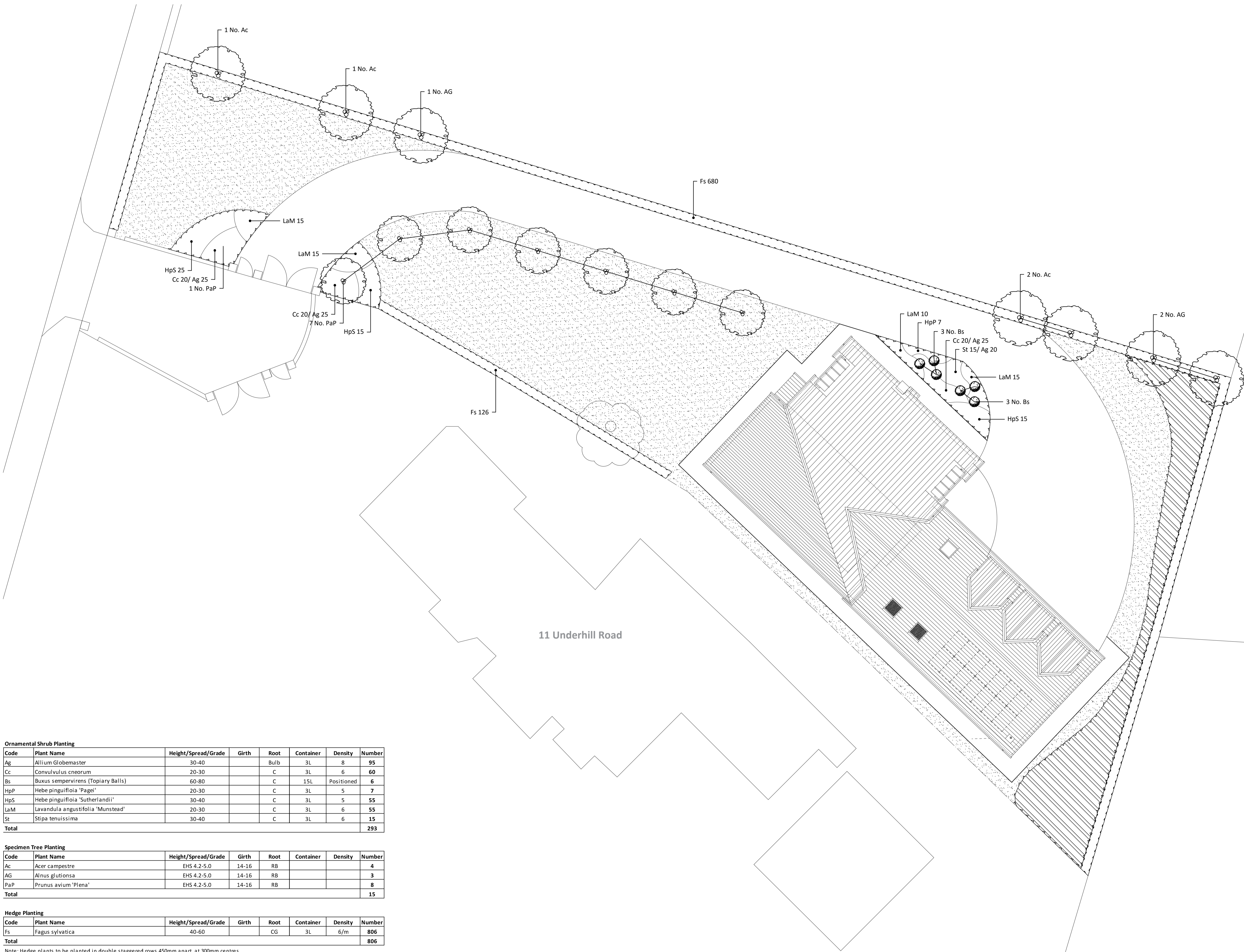
Refer to the following British Standards for more detailed information:

- Recommendations for transplanting rootballed trees BS 4043
- Code of practice for general landscape operations BS4428
- Specifications for topsoil BS 3228
- Nursery Stock BS 3939 part 1.

client Wearmouth Architectural Design
project Land at 11 Underhill Road Cleadon

drawing title Detailed Soft Landscape Proposals

status PRELIMINARY
drawing no. NS15-PP-001 revision -
drawn by AB checked by BD scale 1:100 @ A1



Ornamental Shrub Planting

Code	Plant Name	Height/Spread/Grade	Girth	Root	Container	Density	Number
Ag	Allium Globemaster	30-40		Bulb	3L	8	95
Cc	Convulvulus cneorum	20-30		C	3L	6	60
Bs	Buxus sempervirens (Topiary Balls)	60-80		C	15L	Positioned	6
HpP	Hebe pinguifolia 'Pagei'	20-30		C	3L	5	7
HpS	Hebe pinguifolia 'Sutherlandii'	30-40		C	3L	5	55
LaM	Lavandula angustifolia 'Munstead'	20-30		C	3L	6	55
St	Stipa tenuissima	30-40		C	3L	6	15
Total							293

Specimen Tree Planting

Code	Plant Name	Height/Spread/Grade	Girth	Root	Container	Density	Number
Ac	Acer campestre	EHS 4.2-5.0	14-16	RB			4
AG	Alnus glutionsa	EHS 4.2-5.0	14-16	RB			3
PaP	Prunus avium 'Plena'	EHS 4.2-5.0	14-16	RB			8
Total							15

Hedge Planting

Code	Plant Name	Height/Spread/Grade	Girth	Root	Container	Density	Number
Fs	Fagus sylvatica	40-60		CG	3L	6/m	806
Total							806

Note: Hedge plants to be planted in double staggered rows 450mm apart, at 300mm centres